



sungpower

Sung Power Plastic Container Ltd

New Sample Rendering

fashion



Joyce Xu
2022.06.08



sungpower



fashion



Our proposal

DCLK387

Dimension: D19*H87mm

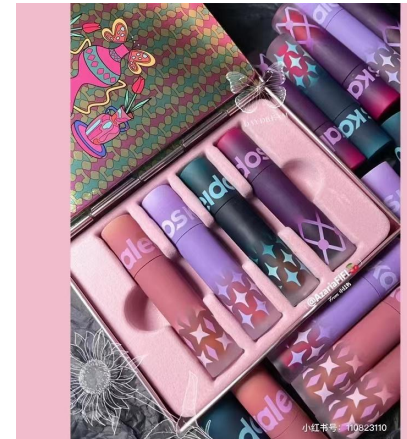
Material: Cap: ABS, Vial: PETG,

Stem: POM

Character: Thick Wall Lipgloss

Filling Capacity: 2.4ml

DCLK387
Size: Φ 19*87mm
容量: 2.4ml





sungpower



fashion

Our proposal

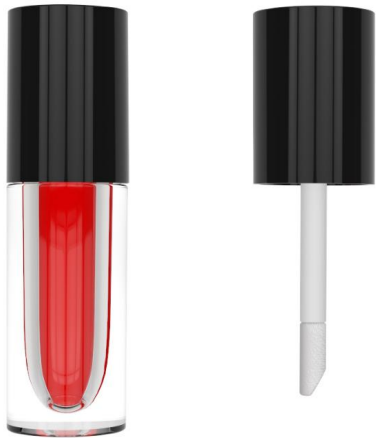
DCLK384

Dimension: D20*68mm

Material: Cap: ABS, Vial: PETG,
Stem: POM

Character: nice looking

Filling Capacity: 2ml



DCLK384
Size: $\Phi 20 \times 68$ mm
容量: 2ml





sungpower



fashion



DCLK386
Size: $\Phi 22 \times 99$ mm
容量: 5ml

Our proposal

DCLK386

Dimension: $\Phi 22 \times H99$ mm

Material: Cap: ABS, Vial: PETG,
Stem: POM

Character: good hand feeling

Filling Capacity: 5ml

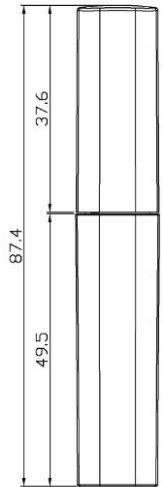
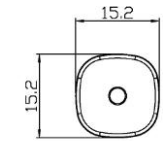




sungpower



fashion



DCLK358
SIZE: 15.2×15.2×87.4 MM
容量: 1.5 mL

Our proposal

DCLB358

Dimension: D15.2*15.2*H87.4mm

Material: Cap:AL or ABS; Stem: PP;
Vial: PETG

Character: round & square shape,
delicate & easy to carry, can filling
formula for lipgloss or liquid eye
shadow

Filling Capacity: 1.5g



sungpower



fashion



DCLK356B2
SIZE: D18*H99.3mm

Our proposal

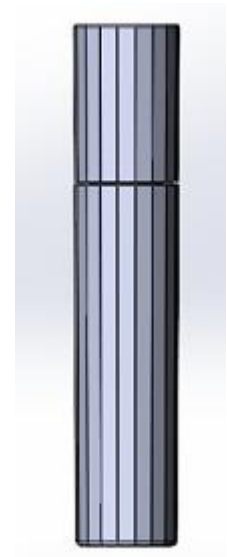
DCLK391

Dimension: D18*H99.3mm

Material: All components
material will be PETG

Character: high-end

Filling Capacity:4.0ml





sungpower



fashion

Our proposal

DCLK362

Size: 20.15*88.5mm

容量 : 3.8ml



DCLK362

Dimension: D20.15*H88.5mm

Material:

Cap: ABS; Stem: PETG; Vial: PETG;

Plug: LDPE

Character: suit for concealer/lip gloss /
lip honey

Filling capacity: 3.8ml





sungpower



fashion

Our proposal



DCLK378
SIZE:25*100.1
容量:12ml

DCLK378

Dimension: D25*H100.1mm

Material: Cap: ABS, Stem: PETG,
Vial: PETG, Plug: LDPE

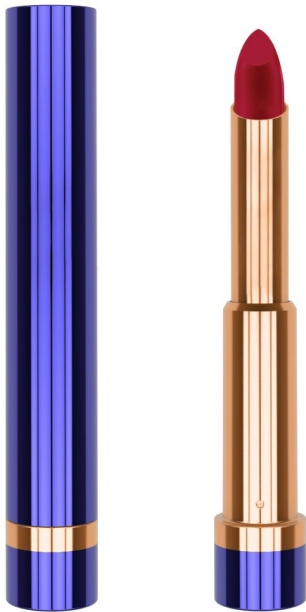
Character: suit for concealer/lip gloss /
lip honey

Filling capacity: 12ml





fashion



DF276
Size: $\Phi 17*108\text{mm}$
容量: 2.5g

Our proposal

DF276

Dimension: D17*108mm

Material: Lid: ABS, Base: ABS,

Mechanism: AL

Character: good looking

Filling Capacity: 2.5g



fashion



DF246

SIZE: 20.6*20.6*74.6mm

容量: 4ml

Our proposal

DF246

Dimension: D20.6*20.6*74.6mm

Material: Lid: AL, Base: AL,

Mechanism: AL

Character: Striped aluminum shell,
unique shape, magnetic structure

Filling Capacity: 4g



fashion



DSMB656
SIZE: 14*115mm
容量: 4.6ml

Our proposal

DSMB656
Dimension: D14*H115mm

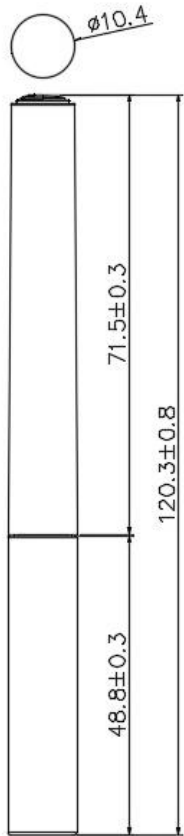
Material: Lid: AL, Stem: PP, Vial:
PETG,

Character:
Extremely fine brush head, accurately
capture every eyelash, but also can
carefully brush the length of the lower
eyelash, clear roots, natural slender.

Filling Capacity: 4.6ml



fashion



DSEK621

SIZE: $\varnothing 10.4 \times H 120.3 \text{MM}$

Our proposal

DSEK621

Dimension: $D 10.4 * H 120.3 \text{mm}$

Material: Lid: ABS, Stem: PP, Vial: PETG

Filling Capacity: 2ml

Character: Soft hairline, tapering pen tip, more delicate eye makeup



sungpower



fashion



DM1284
SIZES: 113.8*62*11.6mm
容量: 10ml

Our proposal

DM1284

Dimension: L113.8*W62*H11.6mm

Material: lid & base: ABS

Character: Magnetic suction powder,
with vent hole for puff exhaust

Filling Capacity: 10ml



sungpower



fashion



DM1338-2
Size: 174*59*12mm

Our proposal

DM1338

Dimension: L174*W59*H12mm

Material: Lid & Base: ABS

Character: 12 wells for formula, 1
well for eye shadow brush



sungpower



fashion



DM1341B
Size: 198*68*13mm

Our proposal

DM1341B

Dimension: L198*W68*H13mm

Material: Lid & Base: ABS

Character: 10 well eye shadow



sungpower



fashion



Our proposal

DF133

Dimension: D76.5*H28.8mm

Material: Lid: ABS, Jar: AS,

Stopper: PP, Double layer
mesh

Character:

1# Jar high transparent

2# Control power overflow

Filling Capacity:10g



sungpower



fashion

Our proposal

DF122

Dimension: D68*27mm

Material: Lid: ABS, Jar: AS,
Stopper: PP

Filling Capacity: 4g

Character:

1# Exquisite shape

2# Easy to carry

3# Suit for loose powder &
cream



DF122

SIZE: Φ 68*27mm

容量: 4g



sungpower



Thank you!